



F,SH,SR,SMB,SMF TYPE

(1)ORDERING CODE

R2 F 7 x 12 x 20

Material Type Width(A) Lenth(B) Thickness(D)

R80 SH 3.5 x 3 x 5 x H1.3

Material Type Width(A) Lenth(B) Thickness(D) Hole(C)

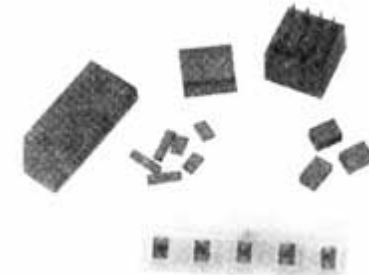
R120 SR 1.5 x 1.5 x 6

Material Type Lenth(A) Width(B) Thickness(D)

R80 SMB 3 x 2.5 x 4

Material Type Lenth(A) Width(B) Thickness(D)

R80 SMB 11 x 11 x 10 (W)



(2)SHAPE

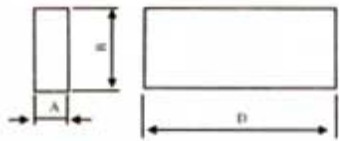


Fig 1 F

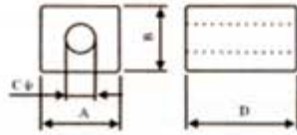


Fig 2 SH

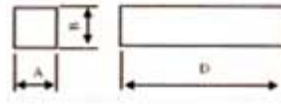


Fig 3 SR

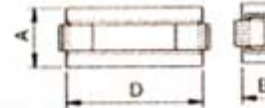


Fig 4 SMB

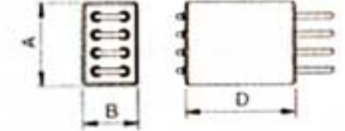


Fig 5 SMF

(3)DIMENSIONS

NO.	TYPE	Fig	Dimensions(mm)			
			A	B	C	D
1	F7X12X20 core	1	7.00±0.20	12.0±0.30		20.0±0.40
1	SH3.5X3X5H1.3 core	2	3.50±0.20	3.00±0.20	1.30±0.10	5.00±0.20
1	SR1.5X1.5X6 core	3	1.50±0.10	1.50±0.10		6.00±0.20
2	SR2.54X1.1X3.6 core	3	2.45±0.10	1.10±0.10		3.60±0.20
1	SMB3X2.5X4 core	4	3.00±0.20	2.50±0.20		4.00±0.20
2	SMB3X2.5X8.5 core	4	3.00±0.20	2.50±0.20		8.50±0.20
1	SMF11X11X10(W) core	5	11.0±0.30	11.0±0.30	0.65±0.10	10.0±0.30
2	SMF7.6X5X10(W) core	5	7.90±0.20	5.00±0.20	0.65±0.10	10.0±0.30

Copyright 2005 YUXIANG Magnetic Materials Ind. Co.,Ltd.All Rights Reserved.

Add: 16F1,jinyuan building,NO.57,hubin S.Rd.,Xiamen,China.361004

Tel : (86)592 2225286 (86)592 2219816 (86)592 2217138 Fax: (86)592 2207122

Email : magnetcom@gmail.com sales@magnet-tech.com