



THP TYPE(Threaded Cup Cores)

(1)ORDERING CODE

R50 THP 6.5 X 5.7 PS2 OC3 PO.6

Material Type Outside Diameter(A) Length(D) Shape Thread Type Thread Pi
Applications: IFT and various filter pair to DR Type Core when in using
Materials can be Changed according to your request



(2)SHAPE

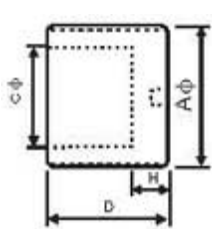


Fig 1 PS4

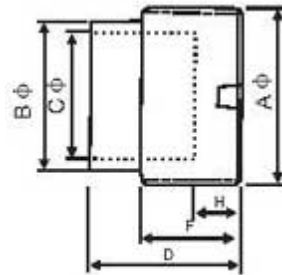
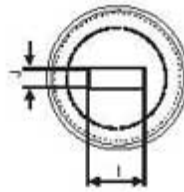


Fig 2 Ps2

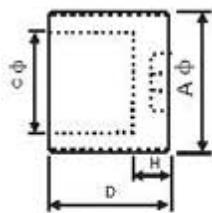
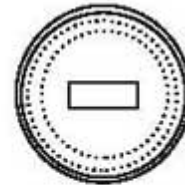
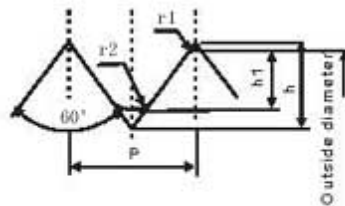
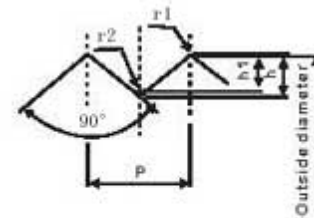


Fig 3 C7Z Ps4



THREAD (OC-3)



THREAD (OC-4)

(3) THREAD TYPE

Thread	Pitch P	Depth engagement h1	Degree	Crest radius r1	Root radius r2
OC-3 core	0.35 ±0.03	0.16 ^{+0.10} -0.05	60±5	0.08±0	0.22
	0.50 ±0.03	0.23 ^{+0.10} -0.03	60±5	0.08±0	0.22
	0.60 ±0.03	0.28 ^{+0.10} -0.03	60±5	0.08±0	0.22
	0.75 ±0.03	0.35 ^{+0.14} -0.03	60±5	0.08±0	0.22
	1.00 ±0.03	0.47 ^{+0.12} -0.03	60±5	0.08±0	0.22
OC-4 core	0.50 ±0.03	0.17 ^{+0.06} -0.03	90 ⁺² -8	0.05±0	0.15
	0.60 ±0.03	0.20 ^{+0.08} -0.03	90 ⁺² -8	0.05±0	0.15
	0.80 ±0.03	0.28 ^{+0.10} -0.03	90 ⁺² -8	0.05±0	0.15

(

(4)DIMENSIONS

NO.	TYPE	Fig	Dimensions(mm)				
			A	B	C	D	H
1	THP4.3×2PS4 core	1	4.30 ±0.03		3.20 ±0.20	2.00 ±0.20	0.90 ±0.10
2	THP4.6×1.7PS4 core	1	4.60 ±0.03		3.50 ±0.20	1.70 ±0.20	0.65 ±0.10
3	THP4.65×2.5PS4 core	1	4.65 ±0.03		3.50 ±0.20	2.50 ±0.20	0.65 ±0.10
4	THP4.75×2.5PS4 core	1	4.75 ±0.03		3.50 ±0.20	2.50 ±0.20	0.65 ±0.10
5	THP4.8×2.8PS4 core	1	4.80 ±0.03		3.50 ±0.20	2.80 ±0.20	0.65 ±0.10
6	THP5×3PS4 core	1	5.00 ±0.03		4.00 ±0.20	3.00 ±0.20	1.00 ±0.10
7	THP5×3PS4 core	3	5.00 ±0.03		4.00 ±0.20	3.00 ±0.20	1.00 ±0.10
8	THP5.85×5.1PS2 core	2	5.80 ±0.03	5.30 ±0.20	4.20 ±0.20	5.10 ±0.20	1.40 ±0.10
9	THP5.95×2.7PS4 core	1	5.95 ±0.03		4.60 ±0.20	2.70 ±0.20	1.00 ±0.10
10	THP6.55×5.4PS4 core	1	6.55 ±0.03		5.00 ±0.20	5.40 ±0.20	1.50 ±0.10
11	THP6.55×5.7PS4 core	3	6.55 ±0.03		5.00 ±0.20	5.70 ±0.20	1.50 ±0.10
12	THP6.5×5.7PS2 core	2	6.50 ±0.03	6.00 ±0.20	5.00 ±0.20	5.70 ±0.20	1.50 ±0.10
13	THP6.66×3.8PS4 core	1	6.66 ±0.03		5.00 ±0.20	3.80 ±0.20	1.20 ±0.10
14	THP6.74×3.7PS4 core	1	6.74 ±0.03		5.00 ±0.20	3.70 ±0.20	1.20 ±0.10
15	THP6.7×5.8PS2 core	2	6.70 ±0.03	5.90 ±0.20	5.00 ±0.20	5.80 ±0.20	1.50 ±0.10
16	THP6.83×3.7PS4 core	1	6.83 ±0.03		5.40 ±0.20	3.70 ±0.20	1.10 ±0.10
17	THP6.83×7.2PS4 core	1	6.83 ±0.03		5.20 ±0.20	7.20 ±0.20	1.50 ±0.10
18	THP6.85×6.55PS4 core	1	6.85 ±0.03		5.25 ±0.20	6.55 ±0.20	1.50 ±0.10
19	THP6.9×8.7PS4 core	1	6.90 ±0.03		5.75 ±0.20	8.70 ±0.20	1.50 ±0.10
20	THP7.2×6.8PS2 core	2	7.20 ±0.03	6.80 ±0.20	5.70 ±0.20	6.80 ±0.20	1.10 ±0.10
21	THP7.2×8.1PS2 core	2	7.20 ±0.03	6.80 ±0.20	5.70 ±0.20	8.10 ±0.20	1.10 ±0.10
22	THP7.5×6.5PS2 core	2	7.50 ±0.03	6.80 ±0.20	5.35 ±0.20	6.50 ±0.20	2.00 ±0.10
23	THP8.75×8.8PS2 core	2	8.75 ±0.03	8.00 ±0.20	6.70 ±0.20	8.80 ±0.20	1.80 ±0.10
24	THP9.24×10.9PS4 core	1	9.24 ±0.03		7.70 ±0.20	10.9 ±0.20	2.00 ±0.10
25	THP9.60×10PS4 core	1	9.60 ±0.03		7.70 ±0.20	10.0 ±0.20	1.50 ±0.10

Copyright 2005 YUXIANG Magnetic Materials Ind. Co.,Ltd.All Rights Reserved.

Add:16F1,jinyuan building,NO.57,hubin S.Rd.,Xiamen,China.361004

Tel : (86)592 2225286 (86)592 2219816 (86)592 2217138 Fax: (86)592 2207122

Email : magnetcom@gmail.com sales@magnet-tech.com