



**YUXIANG**

www.magnet-tech.com

DR3W, DR4W, DR5W TYPE

(1) ORDERING CODE

R50 DR3W 8 × 10 (S)

Material Type Outside Diameter(A) Length(D) Slot

R20 DR4W 10 × 8.4 (S)

Material Type Outside Diameter(A) Length(D) Slot

R20 DR5W 14 × 15

Material Type Outside Diameter(A) Length(D)

**NOTE: COIL FORM IS ALSO AVAILABLE FOR ABOVE TYPES**

Materials can be Changed according to your request

(2) SHAPE

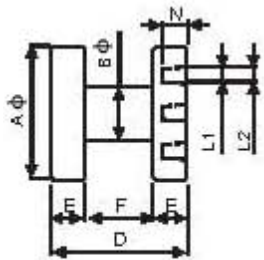


Fig 1 DR3W

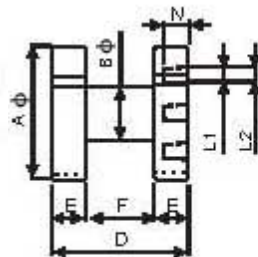


Fig 2 DR3W

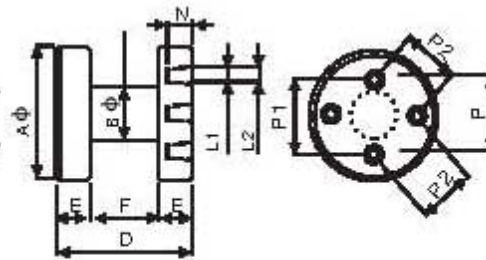


Fig 3 DR3W

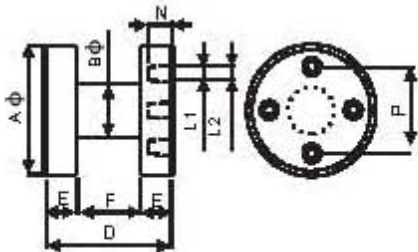


Fig 4 DR4W

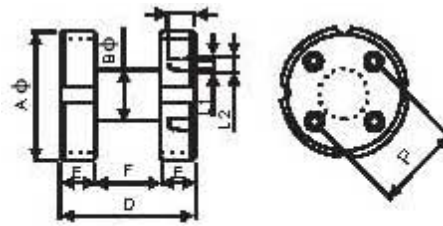


Fig 5 DR4W

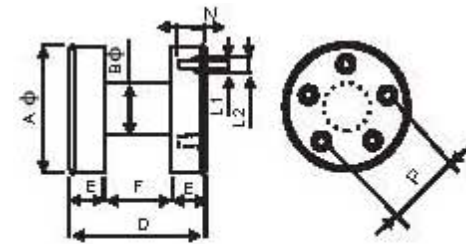
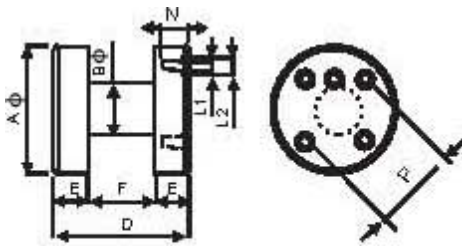


Fig 6 DR5W



## (3)DIMENSIONS

NO.	TYPE	Fig	Dimensions(mm)					
			A	B	D	E	F	P
1	DR3W4×5.5	1	4.00 ±0.20	2.00 ±0.10	5.50 ±0.20	1.60 ±0.10	2.30 ±0.15	1.6
2	DR3W4.5×5.5 (S)	2	4.50 ±0.20	2.00 ±0.10	5.50 ±0.20	1.60 ±0.10	2.30 ±0.15	2
3	DR3W4.5×7.2 (S)	2	4.50 ±0.20	1.80 ±0.10	7.20 ±0.20	1.50 ±0.10	4.20 ±0.15	1.4
4	DR3W5×7	1	5.00 ±0.20	2.00 ±0.10	7.00 ±0.20	2.00 ±0.10	3.00 ±0.15	2.15
5	DR3W6×8.3(S)	2	6.00 ±0.20	2.50 ±0.10	8.30 ±0.20	2.15 ±0.15	4.00 ±0.20	2.25
6	DR3W8×10	1	8.00 ±0.20	3.50 ±0.15	10.0 ±0.30	2.25 ±0.15	5.50 ±0.20	4
7	DR3W8×10(S)	2	8.00 ±0.20	3.50 ±0.15	10.0 ±0.30	2.25 ±0.15	5.50 ±0.20	4
8	DR3W9×12	1	9.00 ±0.20	4.00 ±0.20	12.0 ±0.30	2.00 ±0.15	10.0 ±0.20	5
9	DR3W10×16	1	10.0 ±0.30	5.50 ±0.20	16.0 ±0.30	3.00 ±0.15	10.0 ±0.20	5
10	DR3W12×20	3	12.0 ±0.30	5.00 ±0.20	20.0 ±0.30	3.00 ±0.15	14.00 ±0.20	P 6 /P2 3 .3 1
11	DR3W14×15	3	14.0 ±0.30	7.00 ±0.20	15.0 ±0.30	3.00 ±0.15	9.00 ±0.20	P 10/P7.51
12	DR3W14×15 (S)	2	14.0 ±0.30	7.00 ±0.20	15.0 ±0.30	3.00 ±0.15	9.00 ±0.20	8
13	DR3W16×18	3	16.0 ±0.30	10.0 ±0.20	18.0 ±0.30	2.50 ±0.15	13.0 ±0.20	P 10/P2 51
14	DR3W16×18	3	16.0 ±0.30	10.0 ±0.20	18.0 ±0.30	2.50 ±0.15	13.0 ±0.20	P 9 .5/P2 6 .5 1

1	DR4W4.5×5(S)	5	4.50 ±0.20	2.10 ±0.10	5.00 ±0.20	1.40 ±0.10	2.20 ±0.10	2.5
2	DR4W6×8.3(S)	5	6.00 ±0.20	2.80 ±0.15	8.30 ±0.20	2.15 ±0.15	4.00 ±0.20	3
3	DR4W6×8.3(S)	5	6.00 ±0.20	2.80 ±0.15	8.30 ±0.20	2.15 ±0.15	4.00 ±0.20	3
4	DR4W6×8.3	4	6.00 ±0.20	2.80 ±0.15	8.30 ±0.20	2.15 ±0.15	4.00 ±0.20	3
5	DR4W8×10(S)	5	8.00 ±0.20	3.50 ±0.15	10.0 ±0.30	2.25 ±0.15	5.50 ±0.20	4
6	DR4W8×10(S)	5	8.00 ±0.20	3.50 ±0.15	10.0 ±0.30	2.25 ±0.15	5.50 ±0.20	5
7	DR4W9×12	4	9.00 ±0.20	4.00 ±0.20	12.0 ±0.30	2.00 ±0.15	7.00 ±0.20	5
8	DR4W10×16	4	10.0 ±0.30	5.50 ±0.20	16.0 ±0.30	3.00 ±0.15	10.0 ±0.20	4.5
9	DR4W10×16	4	10.0 ±0.30	5.00 ±0.20	16.0 ±0.30	3.00 ±0.15	10.0 ±0.20	7
10	DR4W10×16	4	10.0 ±0.30	5.50 ±0.20	16.0 ±0.30	3.00 ±0.15	10.0 ±0.20	5
11	DR4W10×8.4 (S)	5	10.0 ±0.30	4.60 ±0.20	8.40 ±0.20	1.70 ±0.15	5.00 ±0.20	5.66
12	DR4W14×15	4	14.0 ±0.30	8.00 ±0.20	15.0 ±0.30	3.00 ±0.15	9.00 ±0.20	10
13	DR4W14×15	4	14.0 ±0.30	8.00 ±0.20	15.0 ±0.30	3.00 ±0.15	9.00 ±0.20	10.5
14	DR4W14×15	4	14.0 ±0.30	8.00 ±0.20	15.0 ±0.30	3.00 ±0.15	9.00 ±0.20	8.5
15	DR4W16×18 (H)	4	16.0 ±0.30	10.0 ±0.20	18.0 ±0.30	2.50 ±0.15	13.0 ±0.20	10
16	DR4W16×18 (SH)	5	16.0 ±0.30	10.0 ±0.20	18.0 ±0.30	2.50 ±0.15	13.0 ±0.20	10
17	DR4W16×20 (4S)	5	16.0 ±0.30	9.20 ±0.20	20.0 ±0.40	3.50 ±0.15	13.0 ±0.20	9.9

1	DR5W9×12	6	9.00 ±0.20	4.00 ±0.20	12.0 ±0.30	2.00 ±0.15	7.00 ±0.20	6
2	DR5W14×15	7	14.0 ±0.30	8.00 ±0.20	15.0 ±0.30	3.00 0.15	9.00 ±0.20	10.5

Copyright 2005 YUXIANG Magnetic Materials Ind. Co.,Ltd.All Rights Reserved.

Add: 16F1,jinyuan building,NO.57,hubin S.Rd.,Xiamen,China.361004

Tel : (86)592 2225286 (86)592 2219816 (86)592 2217138 Fax: (86)592 2207122

Email : magnetcom@gmail.com sales@magnet-tech.com