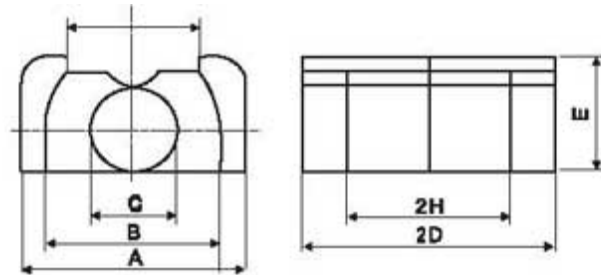




LP CORES



Introduce of LP cores

LP core, EQ cores, EQ13 core, is all E-E core shapes with large wide windows, and is New planar cores. The shape of the core is not a significant consideration for continuous mode operation due to low AC losses. For discontinuous mode operation, the winding area window is chosen as wide as possible to minimize AC winding losses. A table of suitable LP cores types for various power levels like ST core, SQ core, EQ13 core, LP kern, LP22, LP23, LP32, EPX cores, EOP core, EIR core, are given for applications with the converter cores, controller (frequency range 100kHz to 500kHz).

Application of LP cores

LP cores are widely application in Driver transformer, Wideband transformer, Transformatoren kern, DC converter core.

Type	Dimensions (mm)						
	A	B	C	2D	E	2H	I
LP22/13	25.00±0.4	19.0±0.3	8.6±0.2	22.4±0.2	12.9±0.3	16.4±0.3	13.5±0.5
LP23/8	16.5±0.3	12.5±0.3	5.7±0.2	23.4±0.2	8.7±0.2	17.4±0.2	9.0±0.5
LP32/13	25.0±0.4	19.0±0.3	8.6±0.2	31.8±0.2	12.9±0.3	24.1±0.3	13.5±0.5

Type	Core parameter				weight (g/pr.)	A _l (nH/N ²) ±25%	
	C1 (mm ⁻¹)	A _e (mm ²)	l _e (mm)	V _e (mm ³)		F2BD	F2B1
LP22/13	0.72	67.9	49.0	3327	21	3500	3000
LP23/8	1.41	31.3	44.1	1380	9.6	1600	1600
LP32/13	0.91	70.3	64	4499	30	2750	2630